



Medwin Street, Brixton, SW4

2 bedroom maisonette to let

£553 Per Week

Furnished

Property Details

This is a really great two bedroom property in an ideal location for both the Victoria and Northern Line. The flat is split over two levels and benefits from two good sized double bedrooms. The property has a modern family bathroom and benefits from an added WC. The living-room boasts original Victorian features and opens up into the modern kitchen/diner making the flat feel spacious and bright. The kitchen/diner opens out to the private roof terrace, where you can enjoy the long summer days.

Features

- Roof terrace
- Light and airy
- Two double bedrooms
- Two bedrooms
- Split Level
- Furnished

Council tax band D EPC rating D (57)



Medwin Street, Brixton, SW4

Medwin Street

K

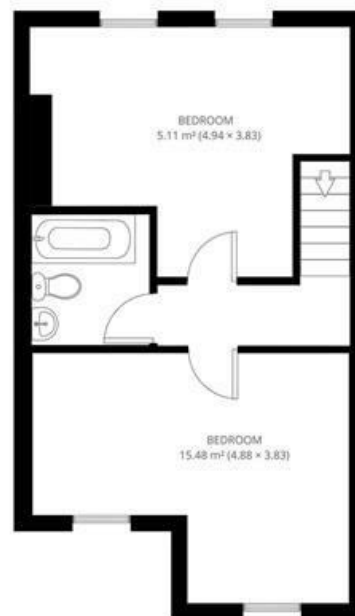
2 Bed Maisonette.
Approx internal area:

872 sqft 81 sqm

While we do try our very best, floor plans are produced as a guide only and we take no responsibility for the precise accuracy with which any property is represented



Ground Floor



First Floor



Medwin Street, Brixton, SW4

